

Series B – An economic solution that packs a punch.

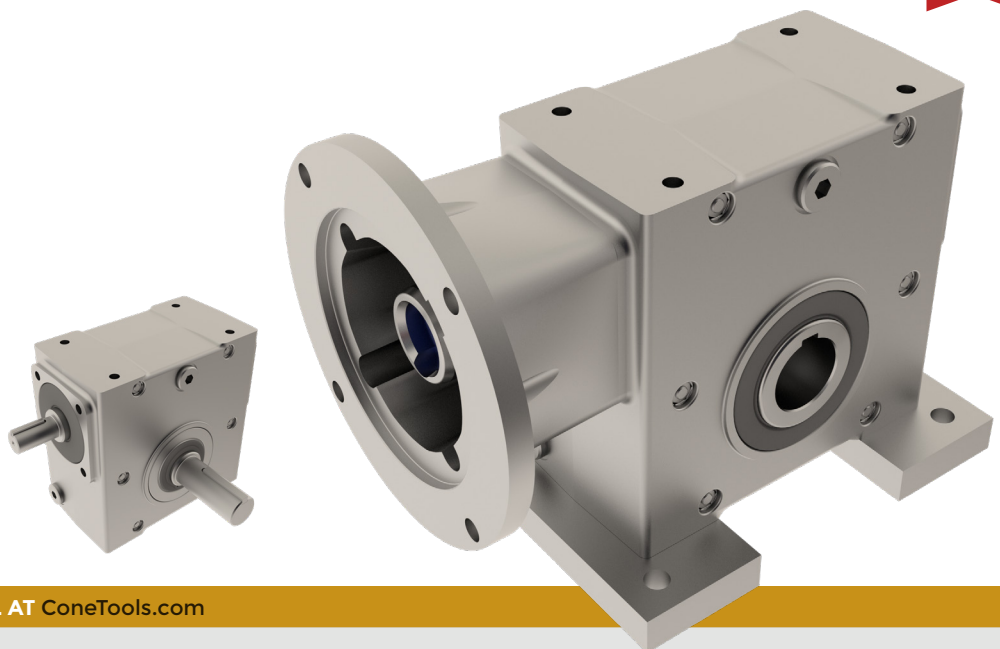
Cone Drive's Series B reducers provide an economical, flexible, and compact solution to fulfill the low-to-medium power range requirements. With capabilities up to 20HP and output torque of up to 7,500 in-lbs., Series B can provide design flexibility with lasting performance.

PACKAGING | STEEL | PLASTICS & RUBBER | CONVEYER | PULP & PAPER

MADE IN
USA

Right Angle Drive

Directly interchangeable with most worm reducers, this Right Angle Drive is unlike any other reducer on the market. No other reducer offers the flexibility, performance, and reliability that you have come to expect from Cone Drive.



 [CONFIGURE & DOWNLOAD YOUR MODEL AT ConeTools.com](#)

S P E C I F I C A T I O N S

PRODUCT FEATURES

- Complete motor mounting accessories
- Easy motor removal with fret free motor bushing
- Dimensionally interchangeable with other manufacturers
- Lightweight aluminum construction
- Conex double enveloping gearing

PRODUCT SPECIFICATIONS

Sizes: 1.33" - 3.54"

Output Torque:

Single Reduction: Up to 4,500 in-lbs | Double Reduction: Up to 7,500 in-lbs

Gear Ratios:


Single Reduction: Up to 60:1 | Double Reduction: Up to 3,600:1




Input Options: Reducer and NEMA

Output Options: Solid or hollow, metric and inch

Washdown Options: USDA approved epoxy paint, stainless steel fasteners, stainless steel output shafts and plated bores



 Cone Drive Operations, Inc.
240 East 12th Street
Traverse City, MI 49684, USA

 +1.888.994.2663
 orders@conedrive.com
 conedrive.com