

## Stainless Steel Washdown Motors

*Cone Drive now offers the option to bundle a NEMA stainless steel (304) washdown motor with your Series F gearbox. Adding a TECO-Westinghouse motor to your order provides an affordable and simple solution.*

PACKAGING | FOOD & BEVERAGE | PHARMACEUTICAL | MEAT & DAIRY

### Reliable and Trusted

TECO-Westinghouse motors are specifically designed for the rugged and demanding environments required for washdown applications.



### PRODUCT SPECIFICATIONS

Frame Sizes: 56C, 182/184TC

Horsepower: 0.5 - 5.0 hp

Voltage: 230/460 V

Style: C-Face, Non-Footed

Ingress Protection: IP 66

Phase: 3 Phase

### Fan Cooled

Part Number	HP	RPM	Frame
WFPV0/54C	0.5	1800	A56C
WFPV0/74C	0.75	1800	A56C
WFPV0014C	1	1800	B56C
WFPV1/54C	1.5	1800	C56C
WFPV0024C	2	1800	C56C
WPV0034C	3	1800	182TC
WPV0054C	5	1800	184TC

Delivery from stock

### Non Vented (coming soon)

Part Number	HP	RPM	Frame
WFNV0/54C	0.5	1800	A56C
WFNV0/74C	0.75	1800	A56C
WFNV0014C	1	1800	B56C
WFNV1/54C	1.5	1800	C56C
WFNV0024C	2	1800	C56C
WNV0034C	3	1800	182TC

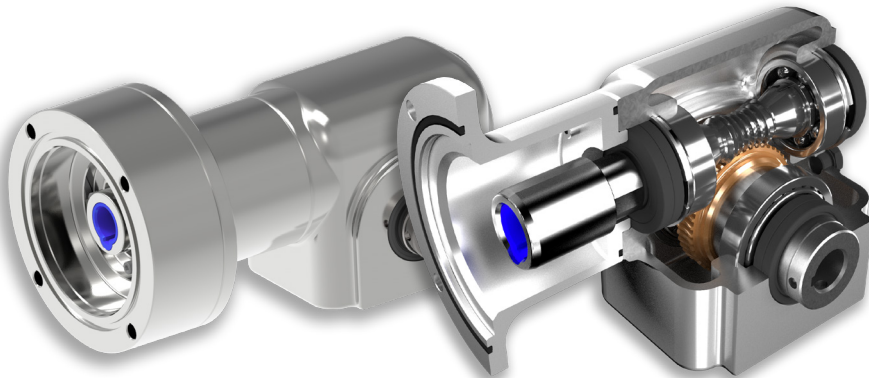




## Powerful, clean solutions with a stainless reputation.

Industry-leading features and unparalleled support make Cone Drive's stainless gearbox suitable for the most sterile manufacturing environments. Cone Drive Stainless Steel is equipped to withstand the most caustic washdown operations.

PACKAGING | FOOD & BEVERAGE | PHARMACEUTICAL | MEAT & DAIRY



### NEMA Product Support

- Industry-leading lead times
- Configuration & rating tools for 3D models and tested & verified ratings
- 5-year warranty
- Modifications & customizations
- Immediate engineering and sales support

NEMA Double Reduction

NEMA Single Reduction



CONFIGURE & DOWNLOAD YOUR MODEL AT [ConeTools.com](https://conetools.com)

# S P E C I F I C A T I O N S

## PRODUCT FEATURES

- Double reduction solutions now available for system design flexibility and thermal capacity superiority: high ratio and high efficiency options
- Reducer and custom options available with standard quill & non-fretting bushing
- Stainless Steel housing (316) and Stainless Steel (304) solid, hollow, or shrink disk output options in inch or metric
- Feet, flanges, or direct mounting for universal positioning
- Dual input bearing and true double enveloping gearing for superior rigidity and torque density
- Lifetime food-grade lubrication, suited for temperatures from -10° to 200°F (-23° to 93°C)
- Double input & output seals with material upgrades available, and o-ring equipped adaptation
- IP69K, A3 and NSF rated, tested, and approved hygienic design

## PRODUCT SPECIFICATIONS

**Sizes Available:** 1.54, 1.75, 1.97, 2.38, 3.00 in (39, 44, 50, 60, 76 mm)

**Ratios:** 5:1 to 600:1, custom

**Backlash Range:** 4 to 24 arcmin (.07 to 0.40°)

**Input Speed:** <1750 RPM

**Input Power:** <14 HP (10 kW)

**Output Torque:** <6,200 in-lbs. (700 Nm)

**Efficiency:** <92%



Cone Drive Operations, Inc.  
240 East 12th Street  
Traverse City, MI 49684, USA



+1.888.994.2663



[orders@conedrive.com](mailto:orders@conedrive.com)



[conedrive.com](https://conedrive.com)