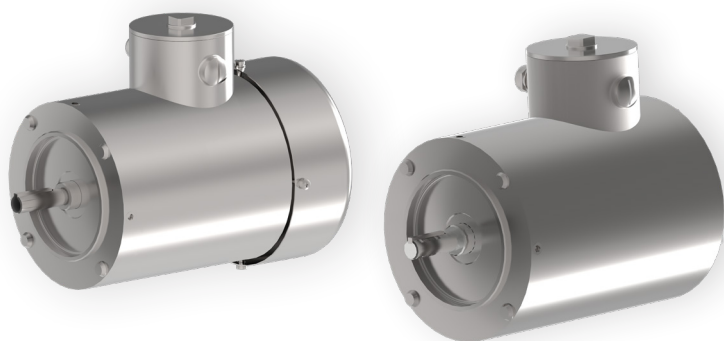


Stainless Steel Washdown Motors

Cone Drive now offers the option to bundle a NEMA stainless steel (304) washdown motor with your Series F gearbox. Adding a TECO-Westinghouse motor to your order provides an affordable and simple solution.

PACKAGING | FOOD & BEVERAGE | PHARMACEUTICAL | MEAT & DAIRY



Reliable and Trusted

TECO-Westinghouse motors are specifically designed for the rugged and demanding environments required for washdown applications.

Fan Cooled

Non Vented

 **CONFIGURE & DOWNLOAD YOUR MODEL AT** [ConeTools.com](https://conetools.com)

S P E C I F I C A T I O N S

HP	Frame	Part Number	
		Fan Cooled	Non Vented
0.5	56C	WFPV0/54C	WFNV0/54C
0.75	56C	WFPV0/74C	WFNV0/74C
1	56C	WFPV0014C	WFNV0014C
1.5	56C	WFPV1/54C	WFNV1/54C
2	56C	WFPV0024C	WFNV0024C
3	182TC	WPV0034C	WNV0034C
5	184TC	WPV0054C	-

Frame Sizes: 56C, 182/184TC

Horsepower: 0.5 - 5.0 hp

Voltage: 230/460 V

Style: C-Face, Non-Footed


Ingress Protection: IP 66




Phase: 3 Phase



Delivery from stock



 **Cone Drive Operations, Inc.**
240 East 12th Street
Traverse City, MI 49684, USA

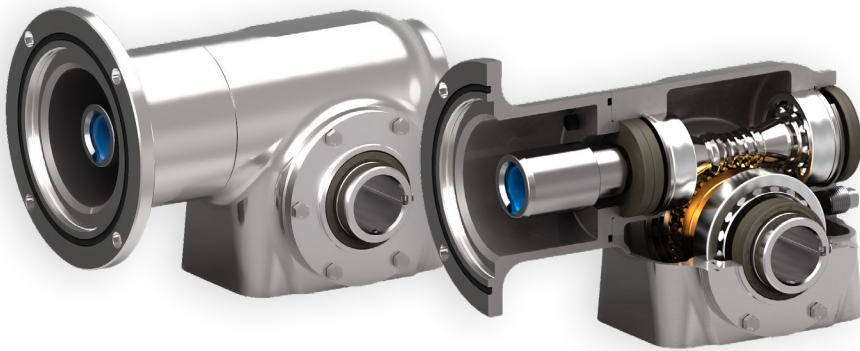
 +1.888.994.2663
 orders@conedrive.com
 conedrive.com



Powerful, clean solutions with a stainless reputation.

Industry-leading features and unparalleled support make Cone Drive's stainless gearbox suitable for the most sterile manufacturing environments. Cone Drive Stainless Steel is equipped to withstand the most caustic washdown operations.

PACKAGING | FOOD & BEVERAGE | PHARMACEUTICAL | MEAT & DAIRY



NEMA Product Support

- Industry-leading lead times
- Configuration & rating tools for 3D models and tested & verified ratings
- 5-year warranty
- Modifications & customizations
- Immediate engineering and sales support

NEMA Double Reduction

NEMA Single Reduction



CONFIGURE & DOWNLOAD YOUR MODEL AT [ConeTools.com](https://conetools.com)

S P E C I F I C A T I O N S

PRODUCT FEATURES

- Lightweight, symmetrical, contoured housing for easy cleaning to maintain bacteria free environments
- Reducer and custom options available with standard quill & non-fretting bushing
- Stainless steel (316) housing and solid, hollow, or shrink disk output options in inch or metric
- Feet, flanges, or direct mounting for universal positioning
- Dual input bearing and true double enveloping gearing for superior rigidity and torque density
- Lifetime food-grade lubrication, suited for temperatures from 22° to 200° F (-30° to 93°C)
- Double input & output seals with material upgrades available, and o-ring equipped adaptation
- IP69K, A3 and NSF rated, tested, and approved hygienic design

PRODUCT SPECIFICATIONS

Sizes Available: 1.54, 1.75, 1.97, 2.38, 3.00 in
(39, 44, 50, 60, 76 mm)

Ratios: 5:1 to 600:1, custom

Backlash Range: 4 to 24 arcmin (.07 to 0.40°)

Input Speed: <1750 RPM

Input Power: <14 HP (10 kW)

Output Torque: <6,200 in-lbs. (700 Nm)

Efficiency: <92%



Cone Drive Operations, Inc.
240 East 12th Street
Traverse City, MI 49684, USA



+1.888.994.2663



orders@conedrive.com



conedrive.com